



**PARMA 17**

**AERIAL TRAILER MOUNTED PLATFORM ARTICULATED AND TELESCOPIC, FOR WORKING HEIGHTS UP TO 17 METER (55,70 FEET)**

**STANDARD MODEL:**

- \* 230V main power
- \* Visual level for stabilisation
- \* Ball Coupling with inertia brake
- \* Aluminium Basket (1.10 x 0.60) m
- \* Hydraulic stabilizers with safety micro switches
- \* Controls in basket and chassis
- \* Proportional hydraulic controls
- \* Emergency lowering from the ground
- \* 90° jib



Management System  
ISO 9001:2008  
www.tuv.com  
ID 9105060482

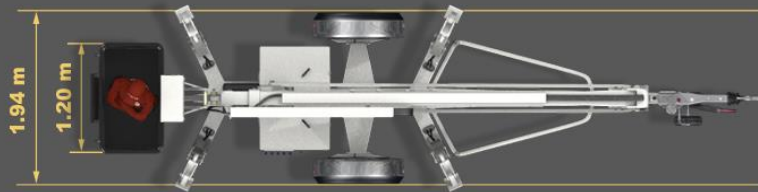
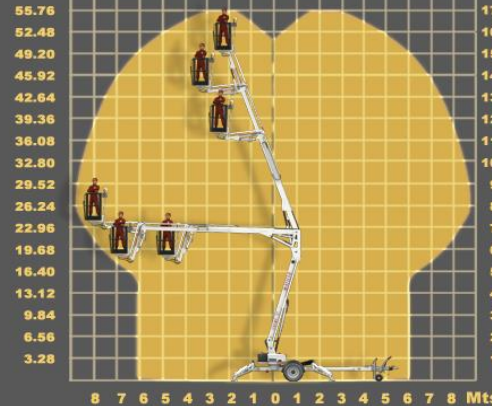


**PARMA 17**



**PARMA 17**

Feet



360 °



**Optional accessories**

- 1 Electric outlet in basket
- 2 Descent buzzer
- 3 Rotating light
- 4 Spare wheels
- 5 Lighting kit for roads
- 6 Hour meter
- 7 Bi energy: 230V + (Gasoline or Batteries)
- 8 Bi energy: 230V + Diesel Engine
- 9 Batteries main power
- 10 Bi energy: Batteries + Petrol Engine
- 11 Bi energy: Batteries + Diesel Engine
- 12 Charge indicator for batteries
- 13 Self driving system on wheels
- 14 Automatic self-leveling for stabilizers
- 15 Insulating basket
- 16 Aluminium basket 1,9m + basket load device
- 17 Control weight in the basket
- 18 Emergency lowering from the basket
- 19 Hydraulic basket rotation 145°
- 20 Support pads (40 x 35)cm
- 21 Stabilizer for ball and ring coupling
- 22 Ring coupling